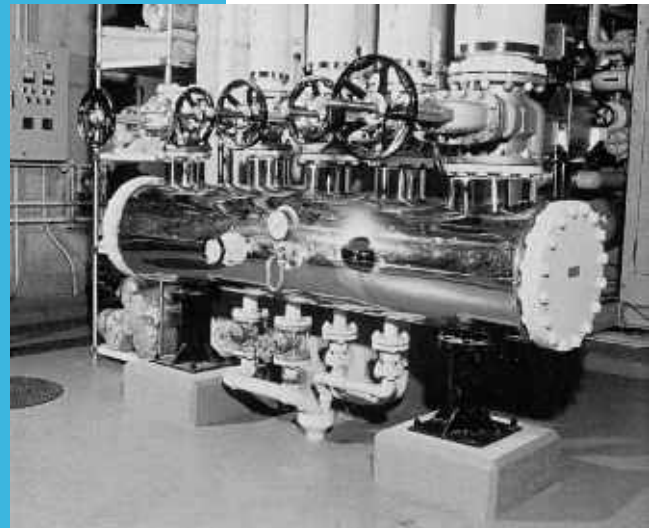


止回阀

Check Valve

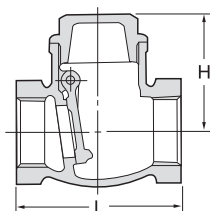


PN16

青铜丝扣旋启式止回阀

Cast Bronze Swing Check Valve Threaded ends to Bs21

R



最高工作压力 [Maximum Working Pressure]

120℃压力变动小的水·油·气 [120°C W.O.G.non-shock]	1.6MPa(16bar)
饱和蒸气 [Saturated steam]	1.0MPa(10bar)

材质 [Materials]

零件 [Parts]	材质 [Material]
阀体 [Body]	青铜CAC [Cast bronze CAC]
阀盖 [Bonnet]	黄铜(DN10 ~ DN80) / 青铜(DN100) [Forged brass(DN10 ~ DN80)/ Cast bronze(DN100)]
阀瓣 [Disc]	黄铜(DN10 ~ DN80) / 青铜(DN100) [Forged brass(DN10 ~ DN80)/ Cast bronze(DN100)]
销轴 [Hinge pin]	黄铜 [Forged brass]

尺寸 [Dimensions]

(mm)

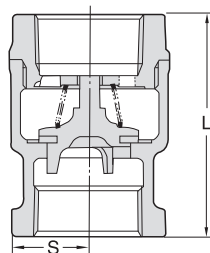
DN	mm	10	15	20	25	32	40	50	65	80	100
	inch	$\frac{3}{8}$	$\frac{1}{2}$	$\frac{3}{4}$	1	1 $\frac{1}{4}$	1 $\frac{1}{2}$	2	2 $\frac{1}{2}$	3	4
L		53	60	53	80	92	102	122	150	165	195
H		39	39	45	52	62	67	79	91	102	119

PN16

青铜丝扣升降式止回阀

Cast Bronze Lift Check Valve Threaded ends to BS21

RF



最高工作压力 [Maximum Working Pressure]

80℃压力变动小的水·油·气 [80°C W.O.G.non-shock]	1.6MPa(16bar)
饱和蒸气 [Saturated steam]	1.0MPa(10bar)

材质 [Materials]

零件 [Parts]	材质 [Material]
阀体 [Body]	青铜CAC406 [Cast bronze CAC406]
阀盖 [Bonnet]	青铜C3604BD [Cast bronze C3604BD]
阀瓣 [Disc]	丁腈橡胶 [NBR]

尺寸 [Dimensions]

(mm)

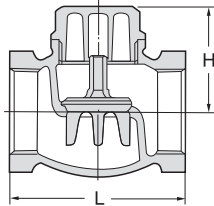
DN	mm	15	20	25	32	40	50
	inch	$\frac{1}{2}$	$\frac{3}{4}$	1	1 $\frac{1}{4}$	1 $\frac{1}{2}$	2
L		53	59	67	78	84	98
H		28	34	41	50	57	70

PN20

青铜丝扣升降式止回阀

Cast Bronze Lift Check Valve Threaded ends to BS21

F



■ 最高工作压力 [Maximum Working Pressure]

120℃压力变动小的水·油·气 [120℃ W.O.G.non-shock]	2.1MPa(21bar)
饱和蒸气 [Saturated steam]	1.0MPa(10bar)

■ 材质 [Materials]

零件 [Parts]	材质 [Material]
阀体 [Body]	青铜CAC [Cast bronze CAC]
阀盖 [Cap]	黄铜(DN10~DN50) / 青铜(DN65以上) [Forged Brass(DN10~DN50) / Cast bronze(DN65 and over)]
闸瓣 [Disc]	青铜 [Cast bronze]

■ 尺寸 [Dimensions]

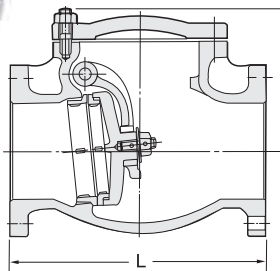
(mm)

DN	mm	10	15	20	25	32	40	50	65	80
	inch	$\frac{3}{8}$	$\frac{1}{2}$	$\frac{3}{4}$	1	$1\frac{1}{4}$	$1\frac{1}{2}$	2	$2\frac{1}{2}$	3
L		44	53	65	77	85	100	119	139	158
H		26	28	34	42	50	56	67	79	91

JIS 10K

铸铁法兰旋启式止回阀

Cast Iron Swing Check Valve Flanged ends

10FCO
10FCOS
10FCOU

■ 最高工作压力 [Maximum Working Pressure]

120℃均衡水流 [120℃ Non-shock water]	1.37MPa(13.7bar) DN350~.....0.98MPa(9.8bar)
120℃水, 油, 空气 [120℃ Water, Oil, Air]	0.98MPa(9.8bar) DN350~.....0.86MPa(8.6bar)
120℃气 [120℃ Gas]	0.20MPa (2.0bar)
饱和蒸气 [Saturated steam]	0.69MPa (6.9bar)

■ 材质 [Materials]

零件 [Parts]	材质 [Material]
阀体 [Body]	灰铸铁FC200 [Cast iron FC200]
阀盖 [Cover]	灰铸铁FC200 [Cast iron FC200]
闸瓣 [Disc]	青铜*1 / 不锈钢*2 (DN40~DN100) / 灰铸铁 (DN125以上) [Cast bronze*1 / Stainless steel*2 (DN40~DN100) / Cast iron(DN125 and over)]
销轴 [Hinge pin]	黄铜*1/不锈钢*2 [Forged brass*1/Stainless steel*2]
垫片 [Gasket]	非石棉 [Non asbestos]
阀体防漏垫圈 [Body seat ring]	青铜*1/不锈钢*2 [Cast bronze*1/Stainless steel*2]
阀座防漏垫圈 [Disc seat ring]	青铜*1/不锈钢*2 [Cast bronze*1/Stainless steel*2]

*1 10FCO *2 10FCOS=13%Cr/10FCOU=304型(304Type)

■ 尺寸 [Dimensions]

(mm)

DN	mm	40	50	65	80	100	125	150	200	250	300	350
	inch	$1\frac{1}{2}$	2	$2\frac{1}{2}$	3	4	5	6	8	10	12	14
L		190	200	220	240	290	360	410	500	620	700	787
H		106	111	121	145	165	207	225	268	315	356	381